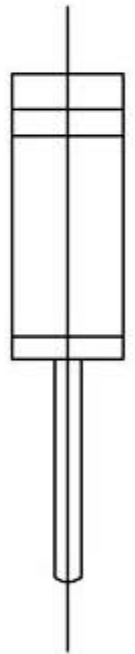
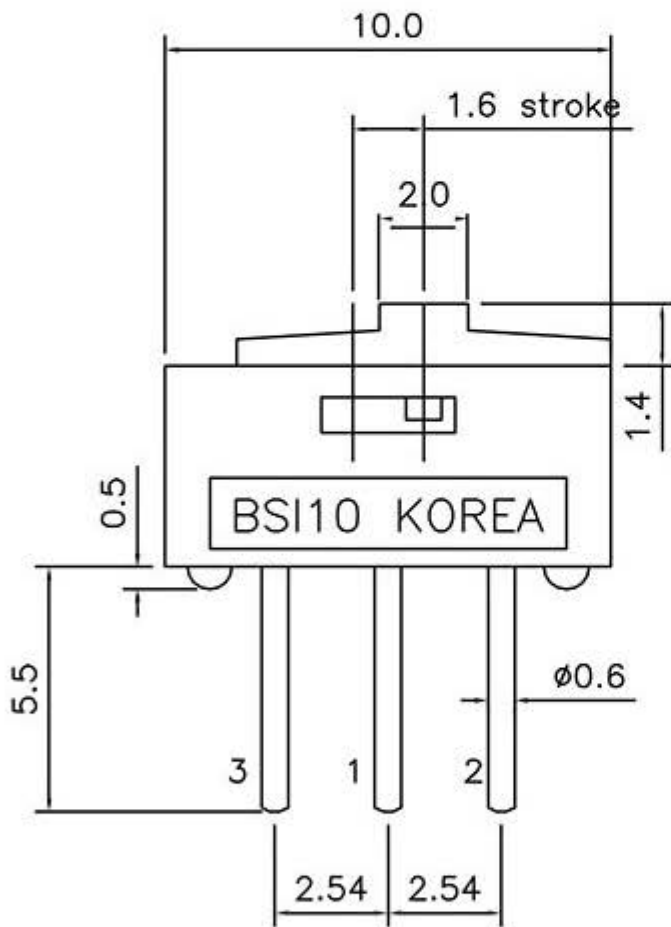
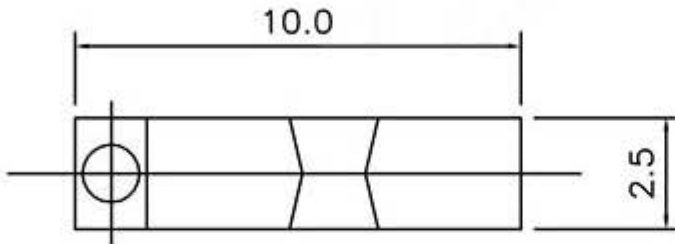
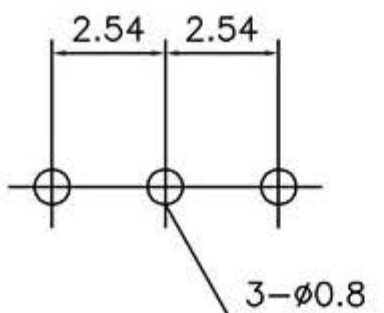


COMMON SPECIFICATION	
Rating	0.5A, DC 12V~0.3A, DC 24V
Contact Resistance	Max 30 m Ω
Operating Force	Max 800 gf
Travel	1.6 mm
Life cycle	1,000 cycle (with load)
Solder Conditions	5 sec, 270 $^{\circ}$ C

DIP SWITCH BSI-10



P.C.B DIMENSION



CIRCUIT

